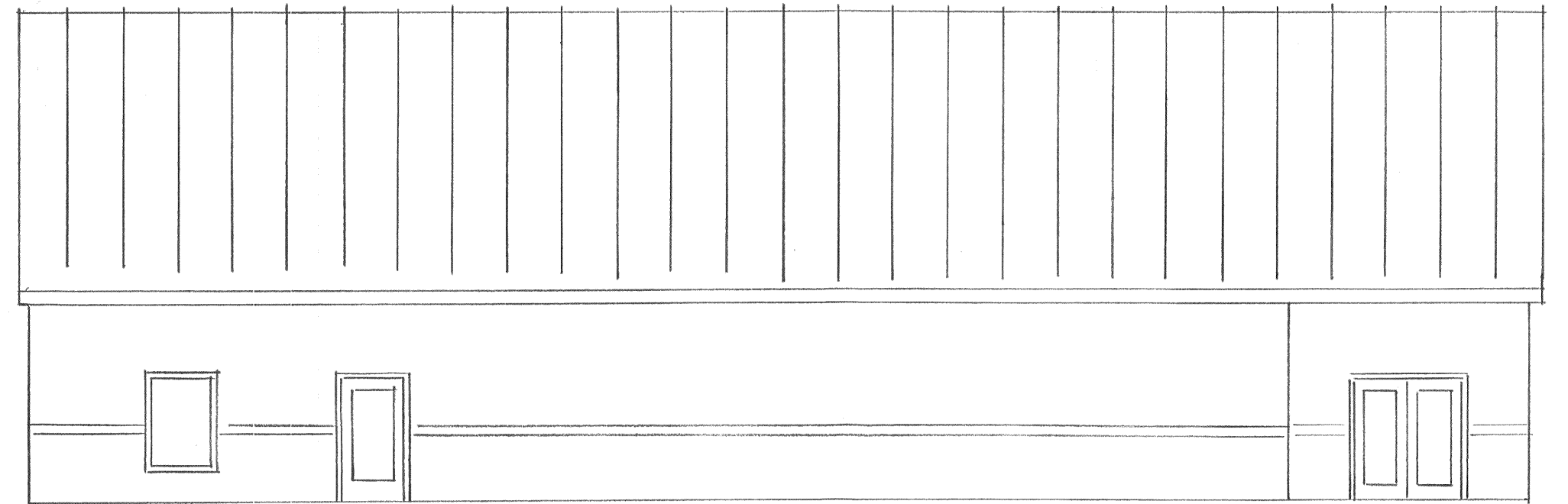
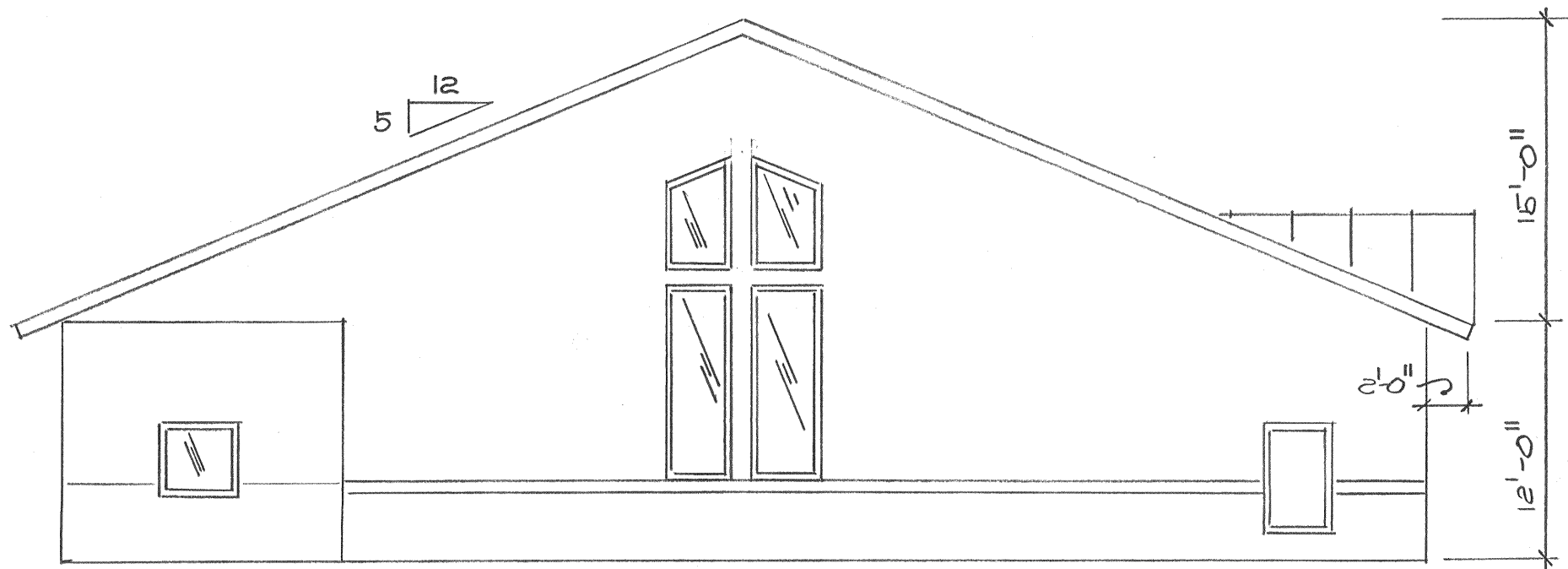


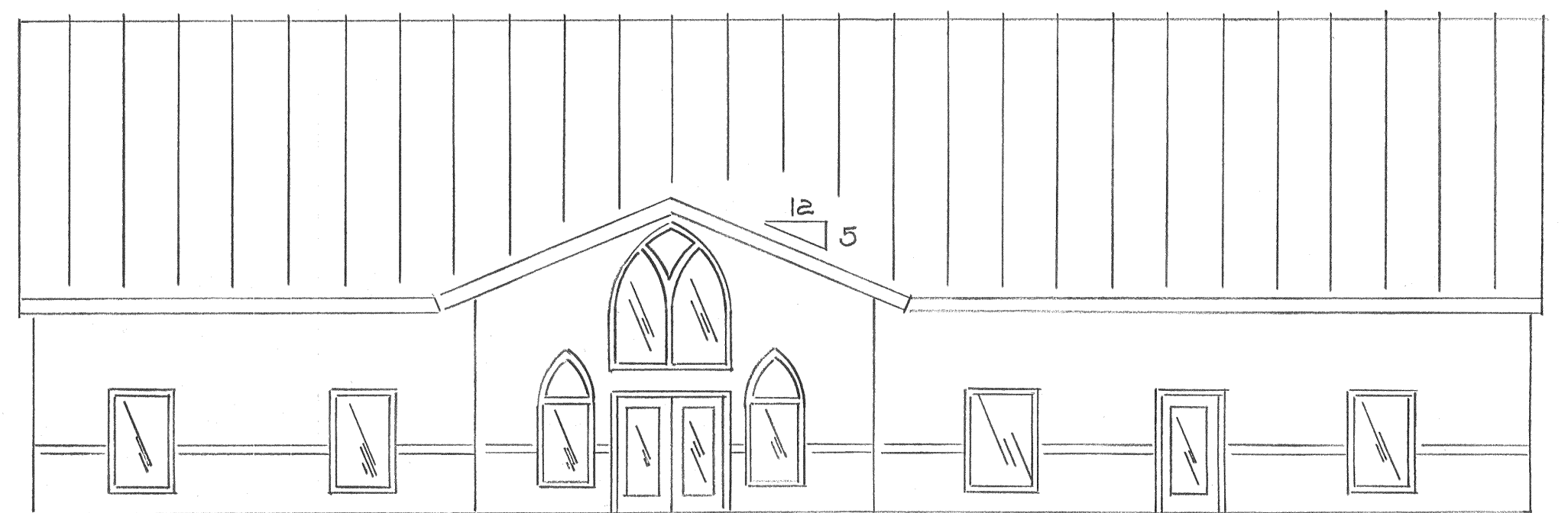
WEST ELEV.



SOUTH ELEV.



WEST ELEV.



FRONT (NORTH) ELEV.

ELEVATIONS SCALE: 1/8" = 1'-0"  
 MAY 26, 2016 DANNY D. SMITH CONSULTING, LLC.

"NOT FOR REGULATORY APPROVAL,  
 PERMITTING, OR CONSTRUCTION."